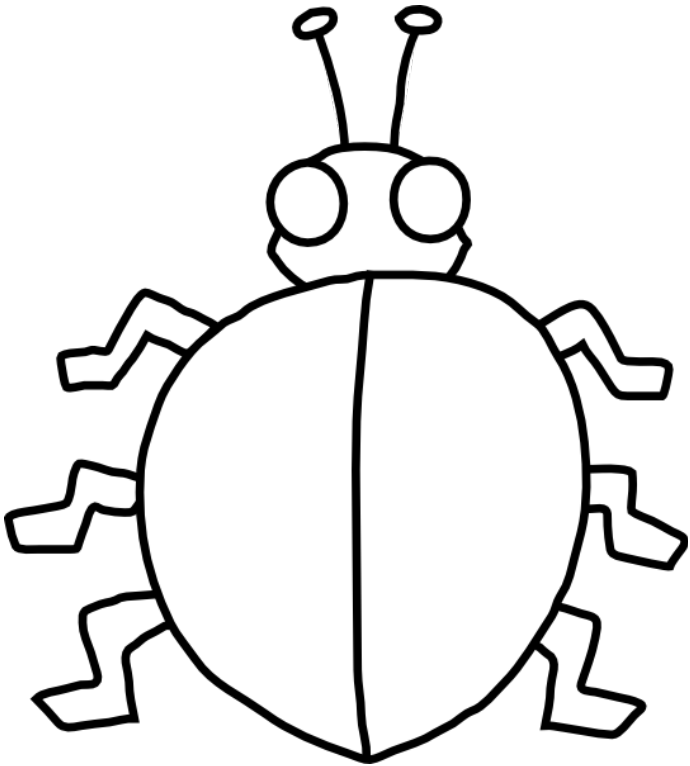
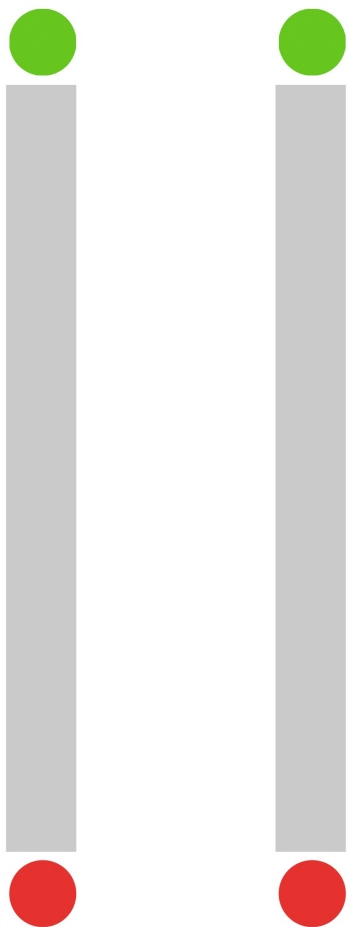
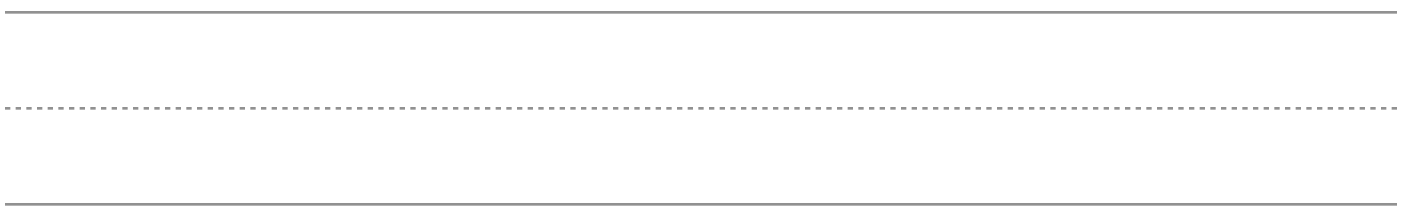
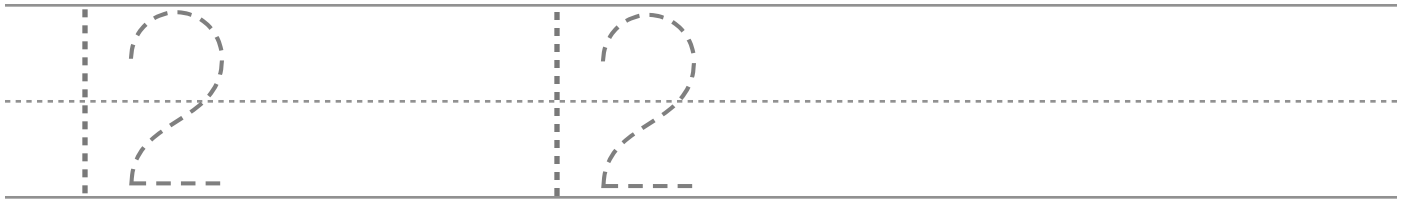
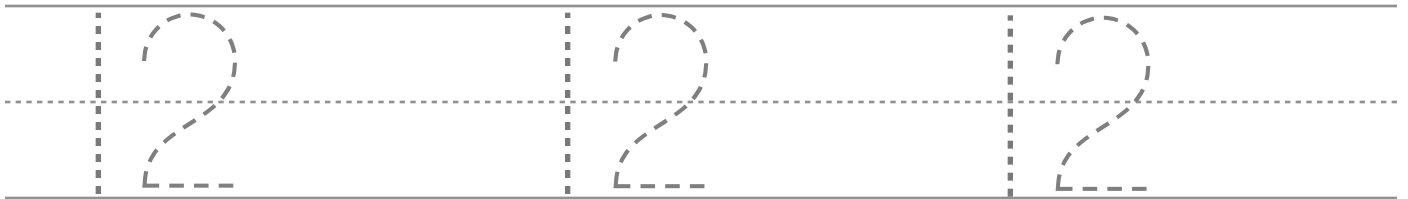
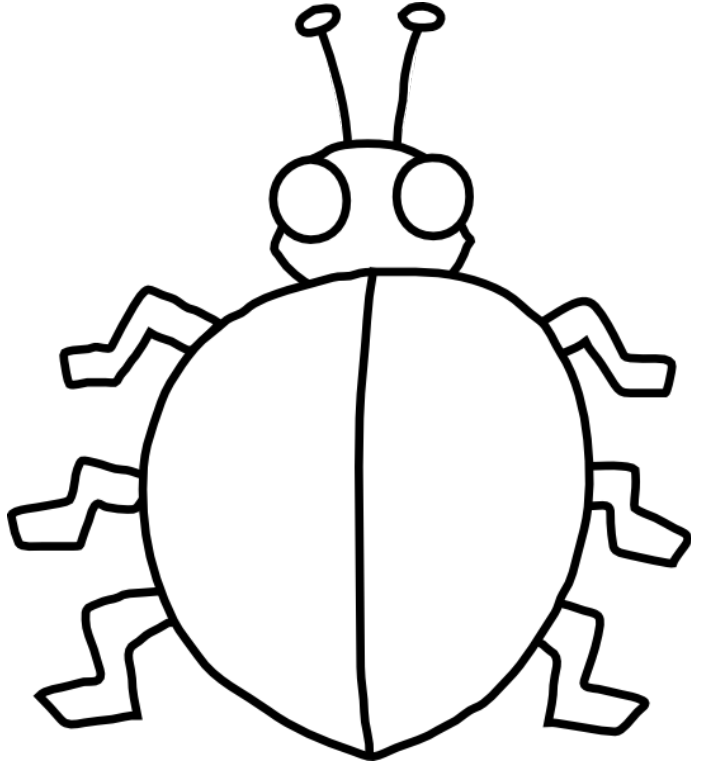
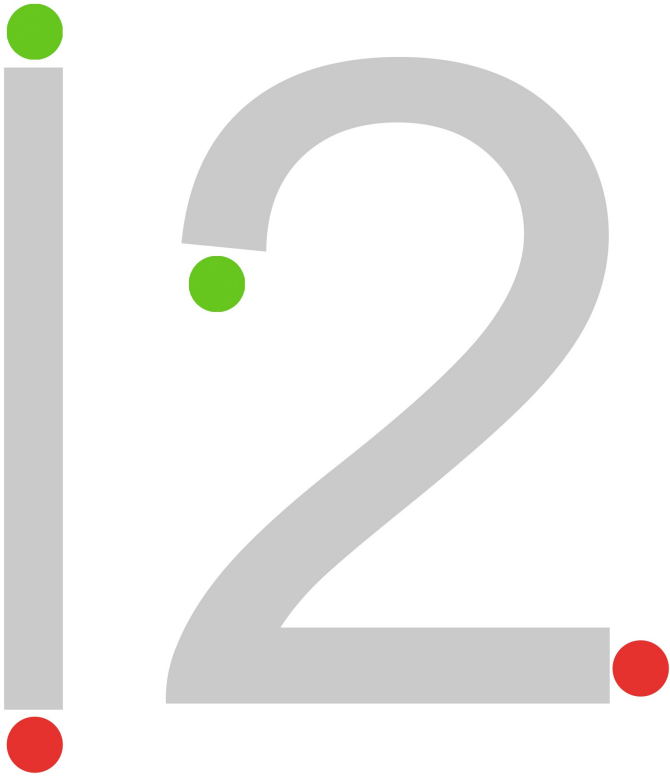


Draw the correct number of spots on the bug.

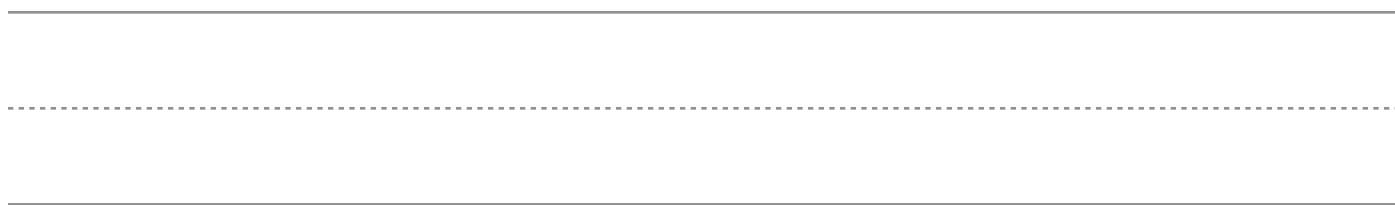
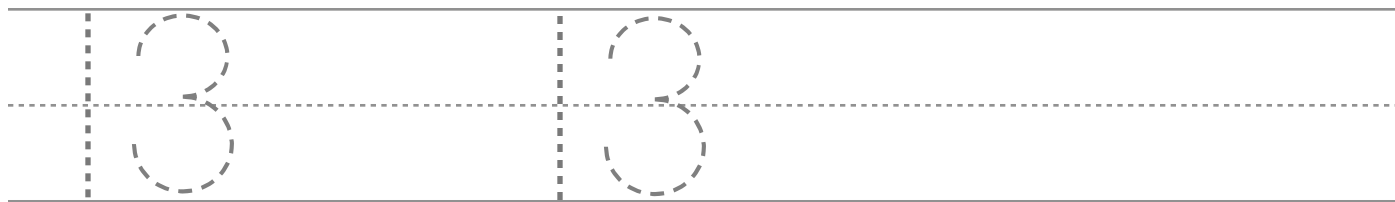
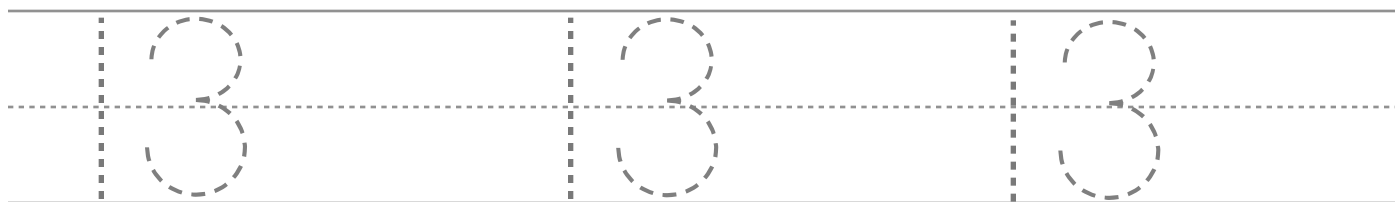
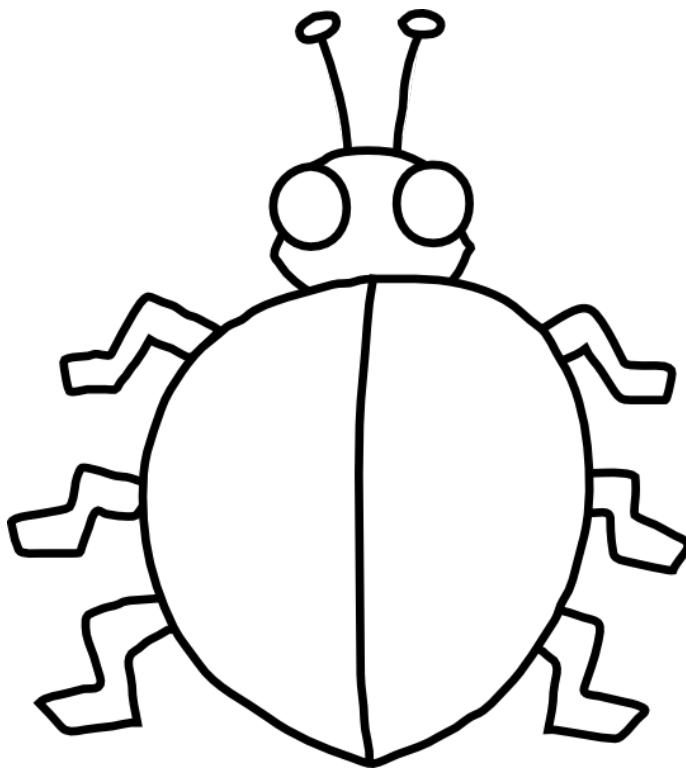
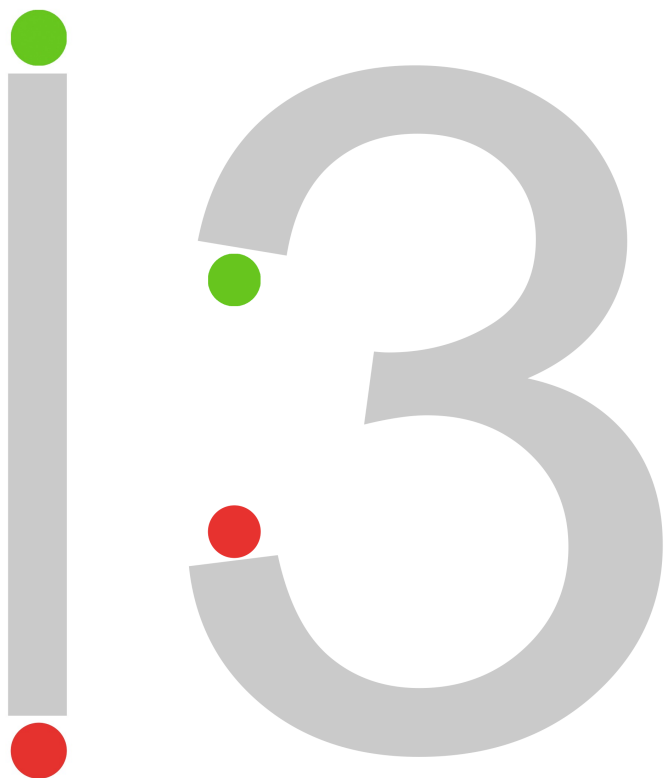


Two sets of handwriting practice lines. Each set consists of a solid top line, a dashed middle line, and a solid bottom line. The first set has eight vertical dashed lines, and the second set has two vertical dashed lines.

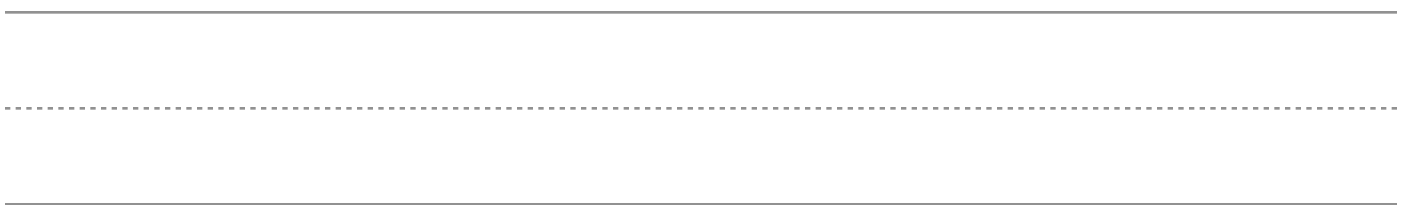
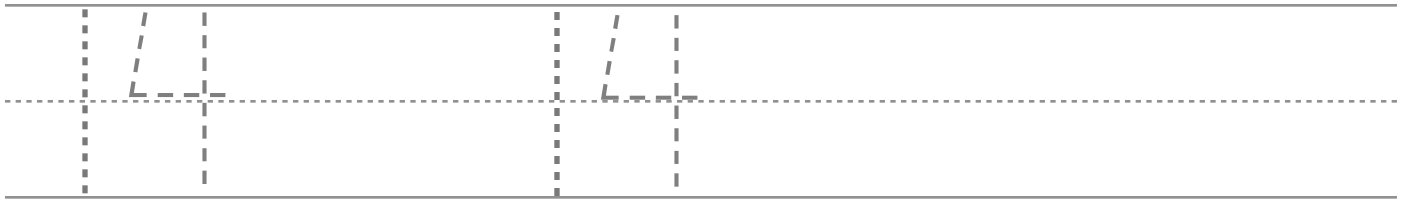
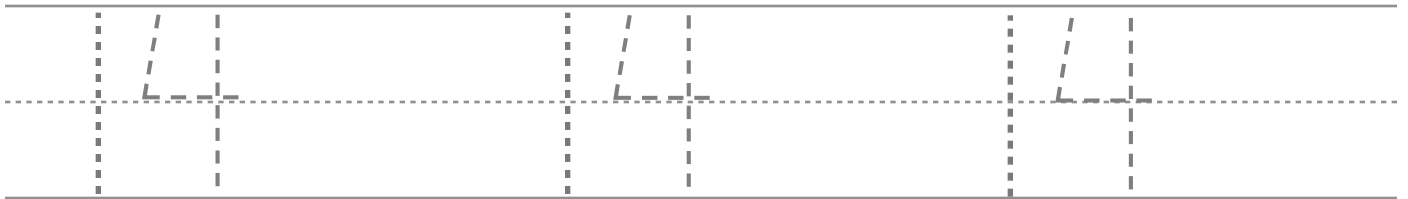
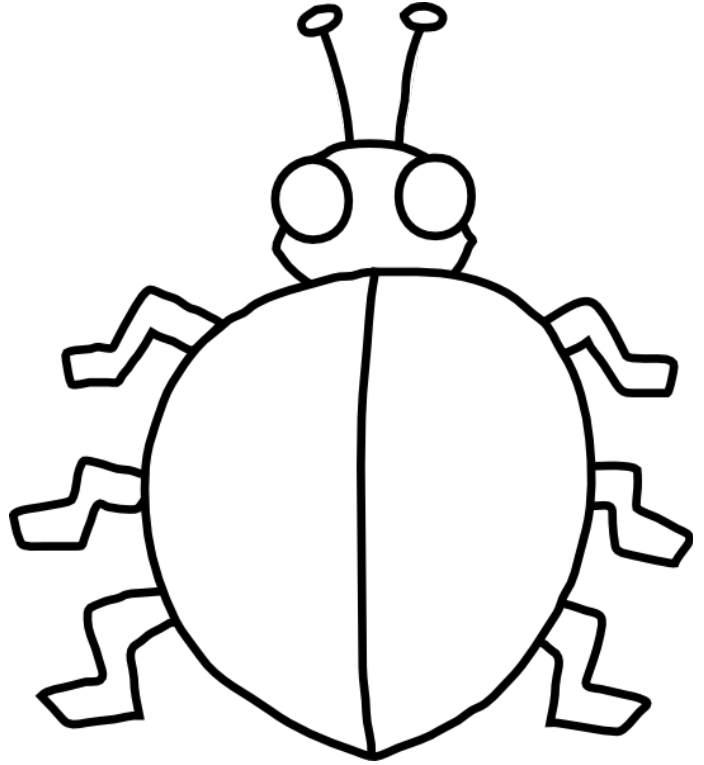
Draw the correct number of spots on the bug.



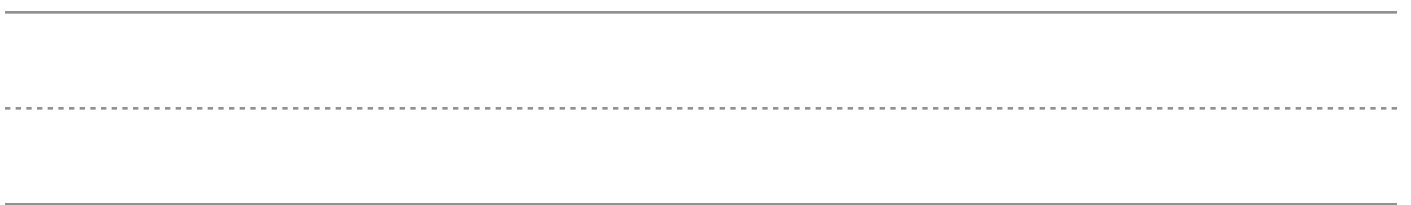
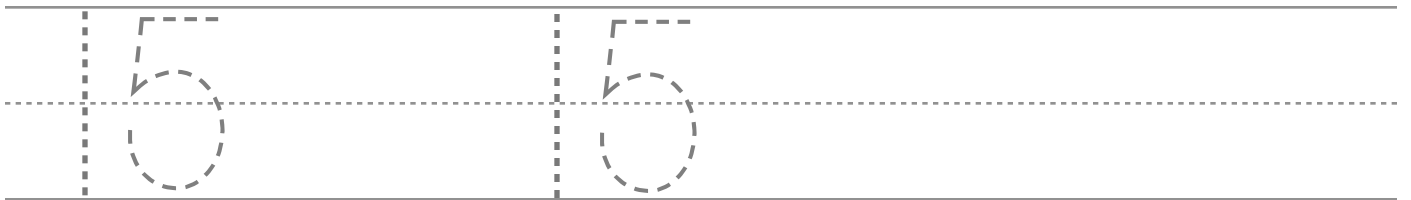
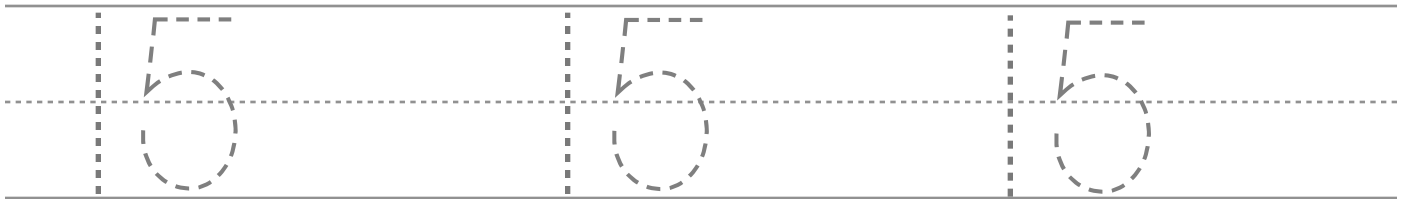
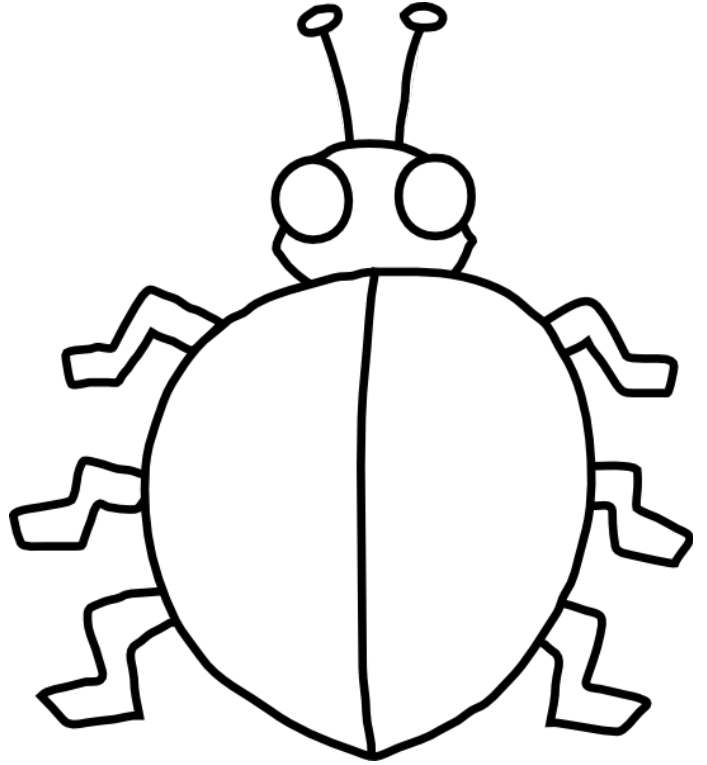
Draw the correct number of spots on the bug.



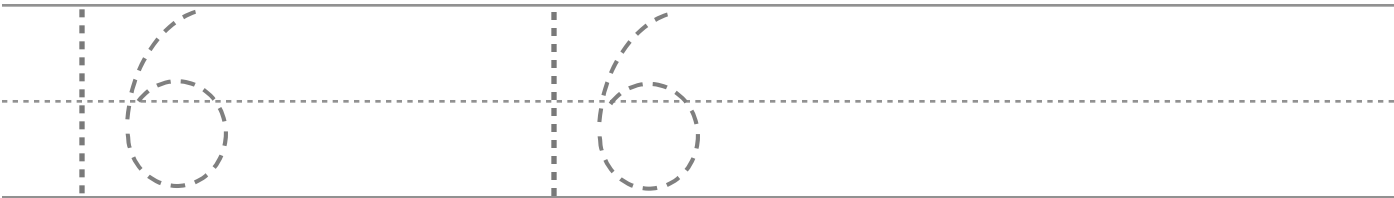
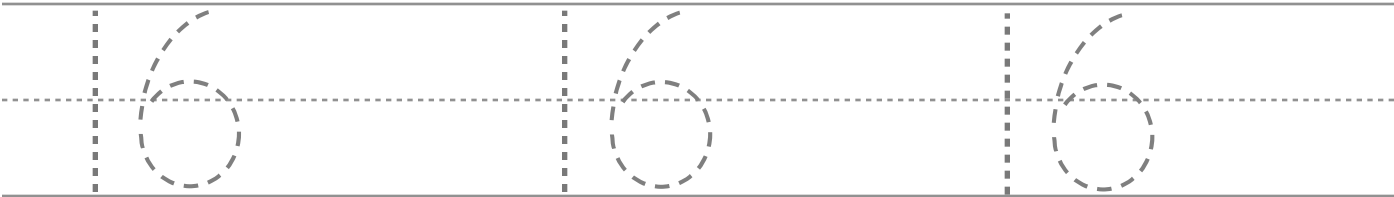
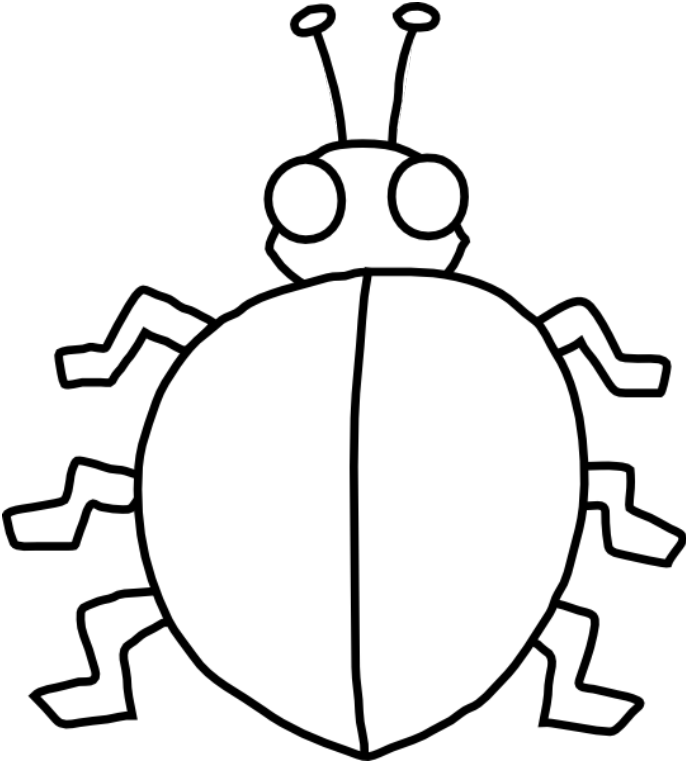
Draw the correct number of spots on the bug.



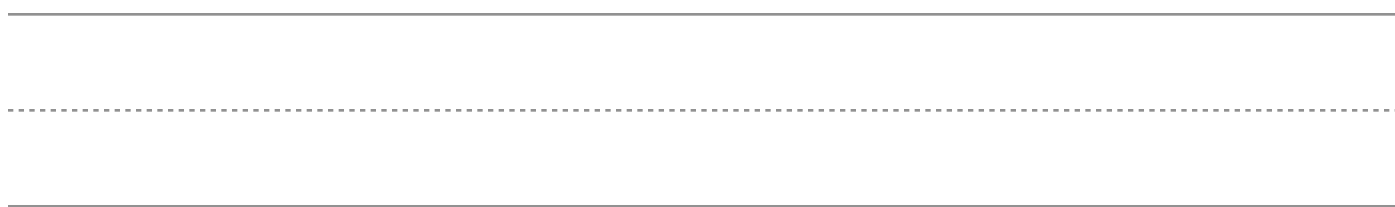
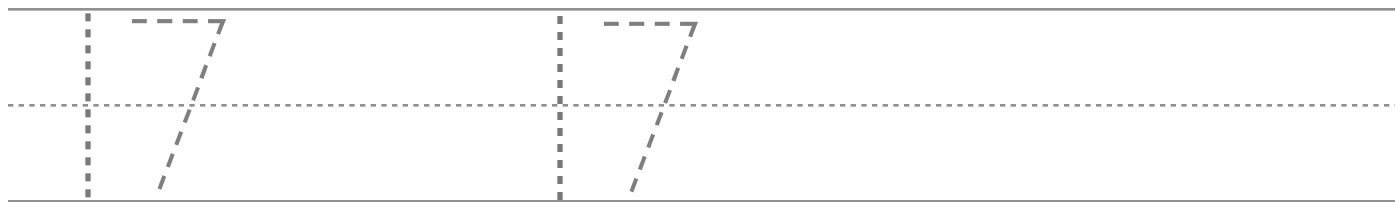
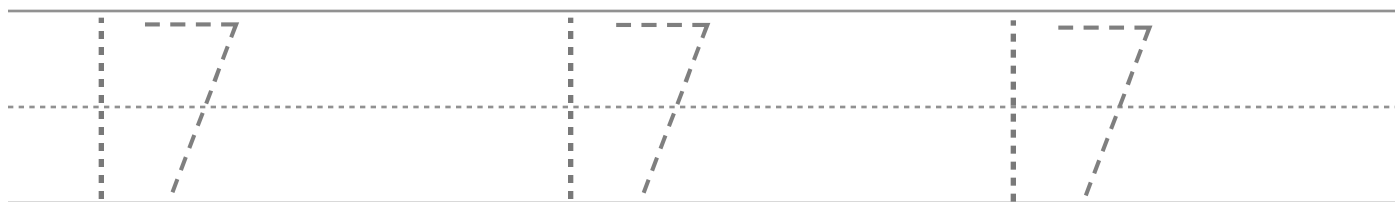
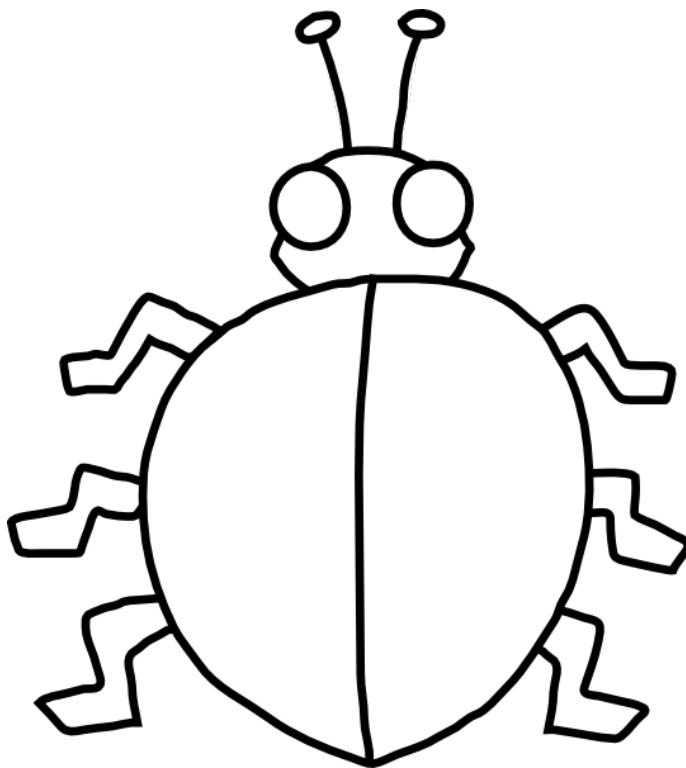
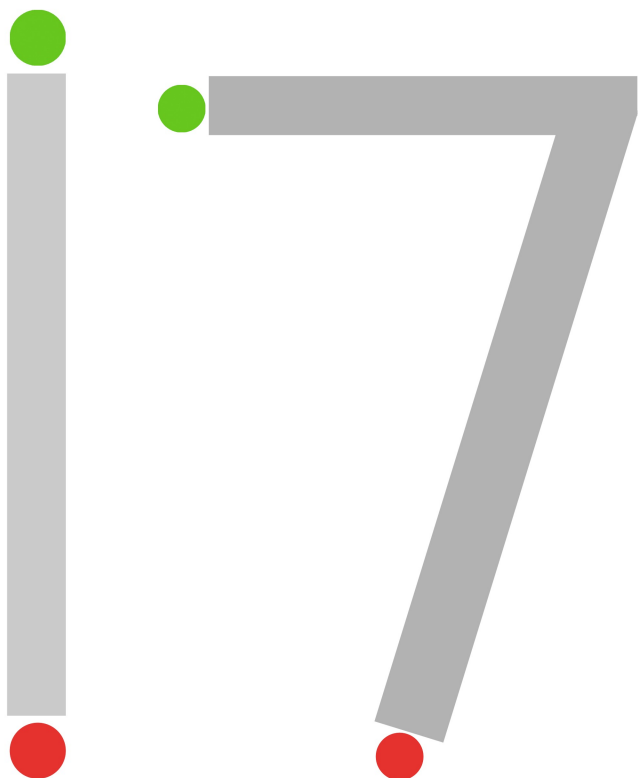
Draw the correct number of spots on the bug.



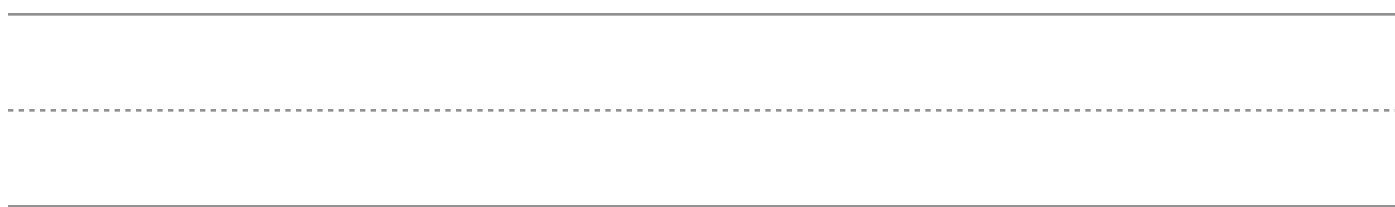
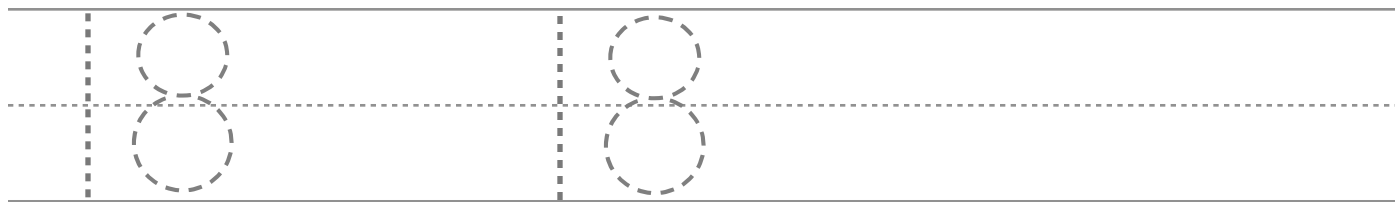
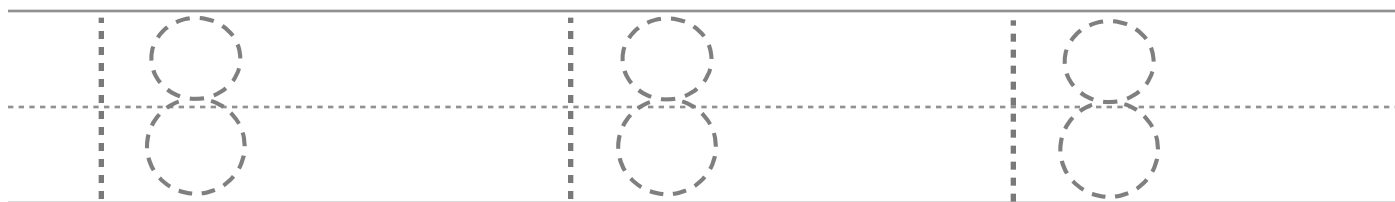
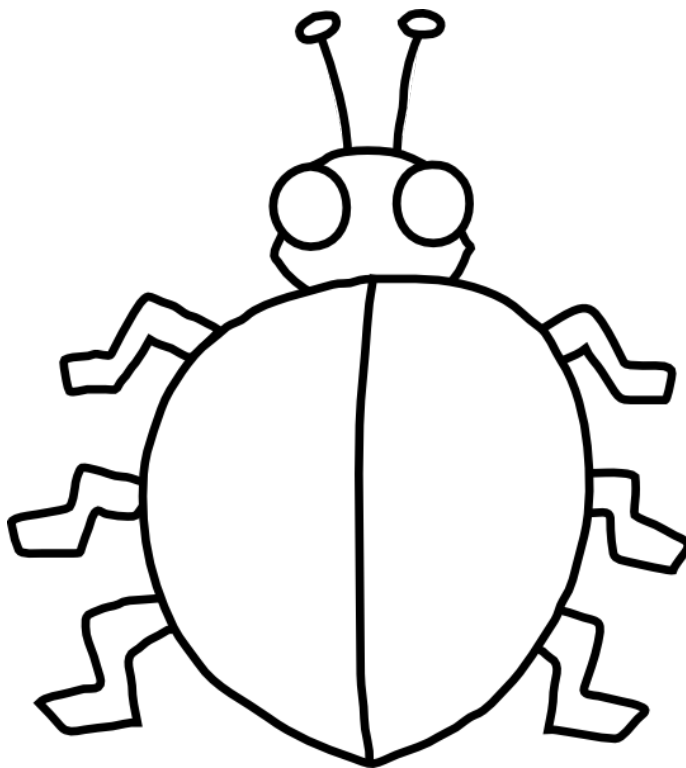
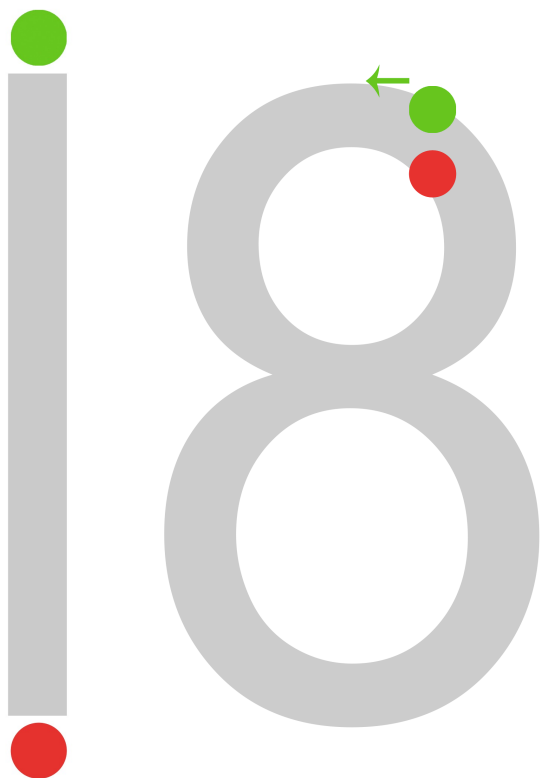
Draw the correct number of spots on the bug.



Draw the correct number of spots on the bug.

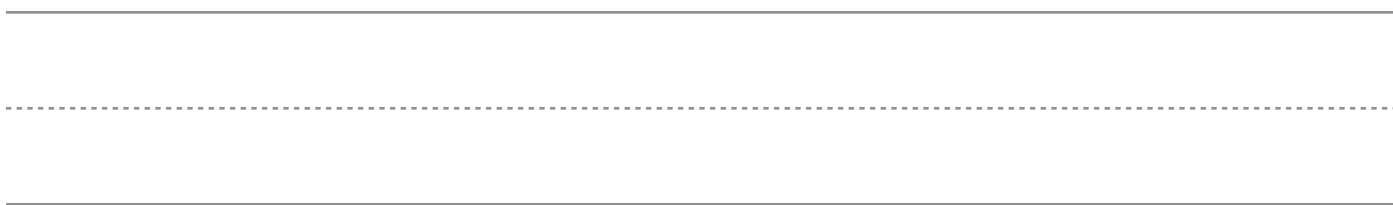
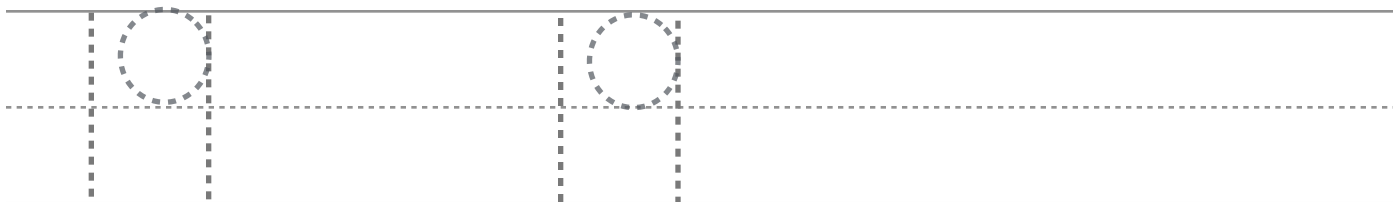
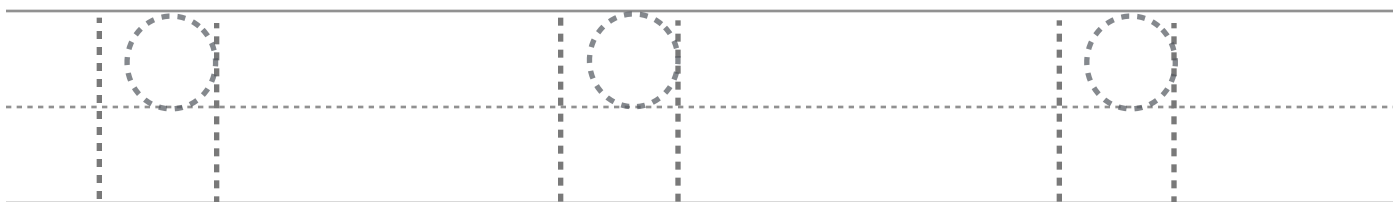
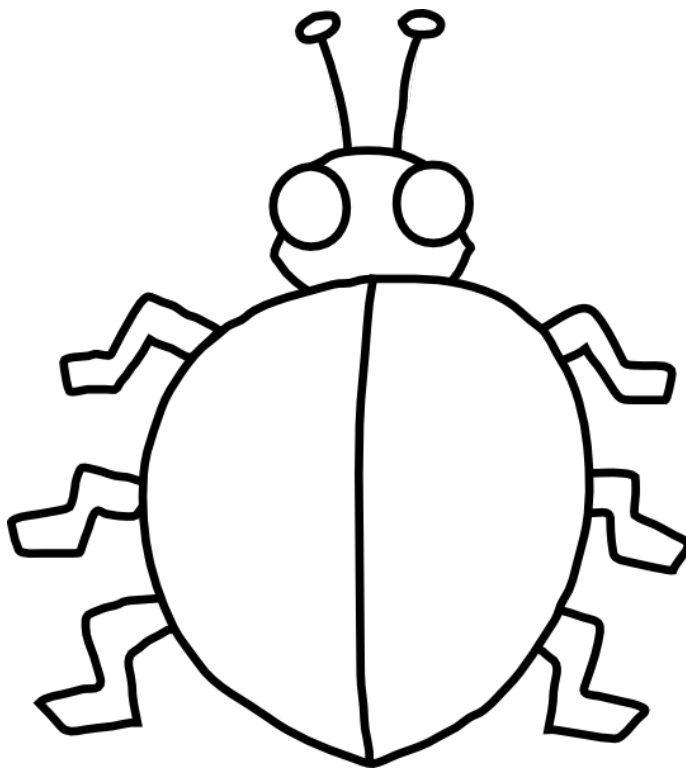
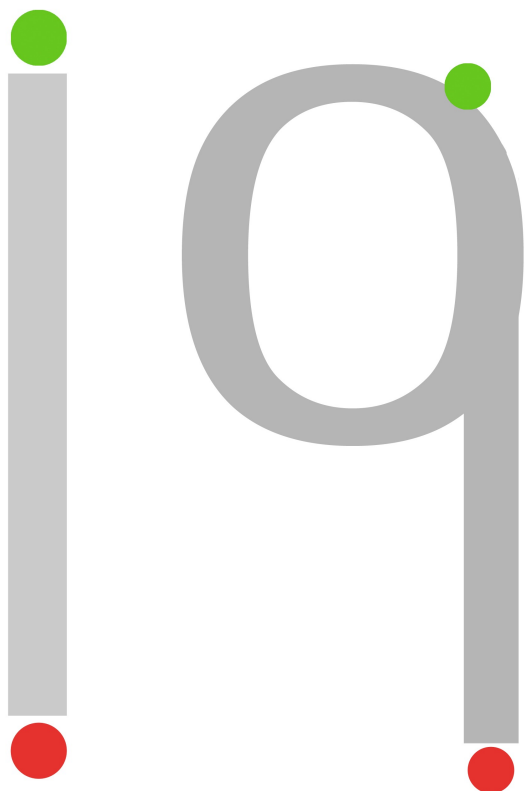


Draw the correct number of spots on the bug.





Draw the correct number of spots on the bug.



Draw the correct number of spots on the bug.

